

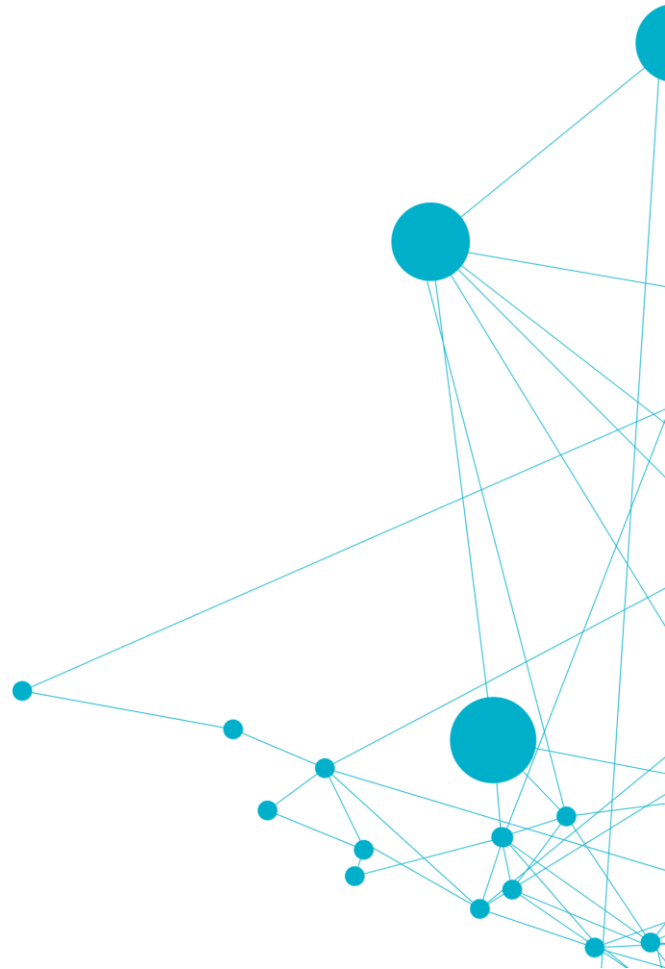


indra

Corporate Social Responsibility

STATEMENT ON CONFLICT MINERALS

Environment



As part of its business operations, Indra develops electronic equipment and components that may contain elements such as tungsten, tantalum, tin or gold. Many electronic components acquired by Indra (components, circuits and connectors) are coated in tin or gold.

Indra is aware that much of the global reserves of such minerals are concentrated in countries such as the Democratic Republic of Congo, Rwanda, Uganda and Burundi, where many mining areas are under the control of guerrilla militias who exploit the local population to extract the minerals to fund their armed movements.

Indra believes that one of its responsibilities as a company is to avoid using minerals or components that have been extracted from such "conflict" mines, and is committed to protecting human rights throughout its value chain.

Mining operators are at the very beginning of the Indra supply chain and the company is unable to trace the exact origin of all minerals. Therefore, in order to prevent the use of "conflict minerals", Indra applies its own commitment to all direct suppliers, thus ensuring that the same policies are extended, link by link, throughout the supply chain.

Indra has established clauses relating to "Conflict minerals" that are to be included in the General Conditions for Orders, the Framework Agreements and the Supply Contracts with its suppliers. Through this clause the supplier warrants that the products supplied in the execution of this Contract/Agreement/Order contain no "Conflict Minerals" according to the terms defined in Section 1502 of the Dodd–Frank Wall Street Reform and Consumer Protection Act.

Information on conflict minerals is being collected from our suppliers through an online questionnaire sent to more than 1,700 suppliers.