



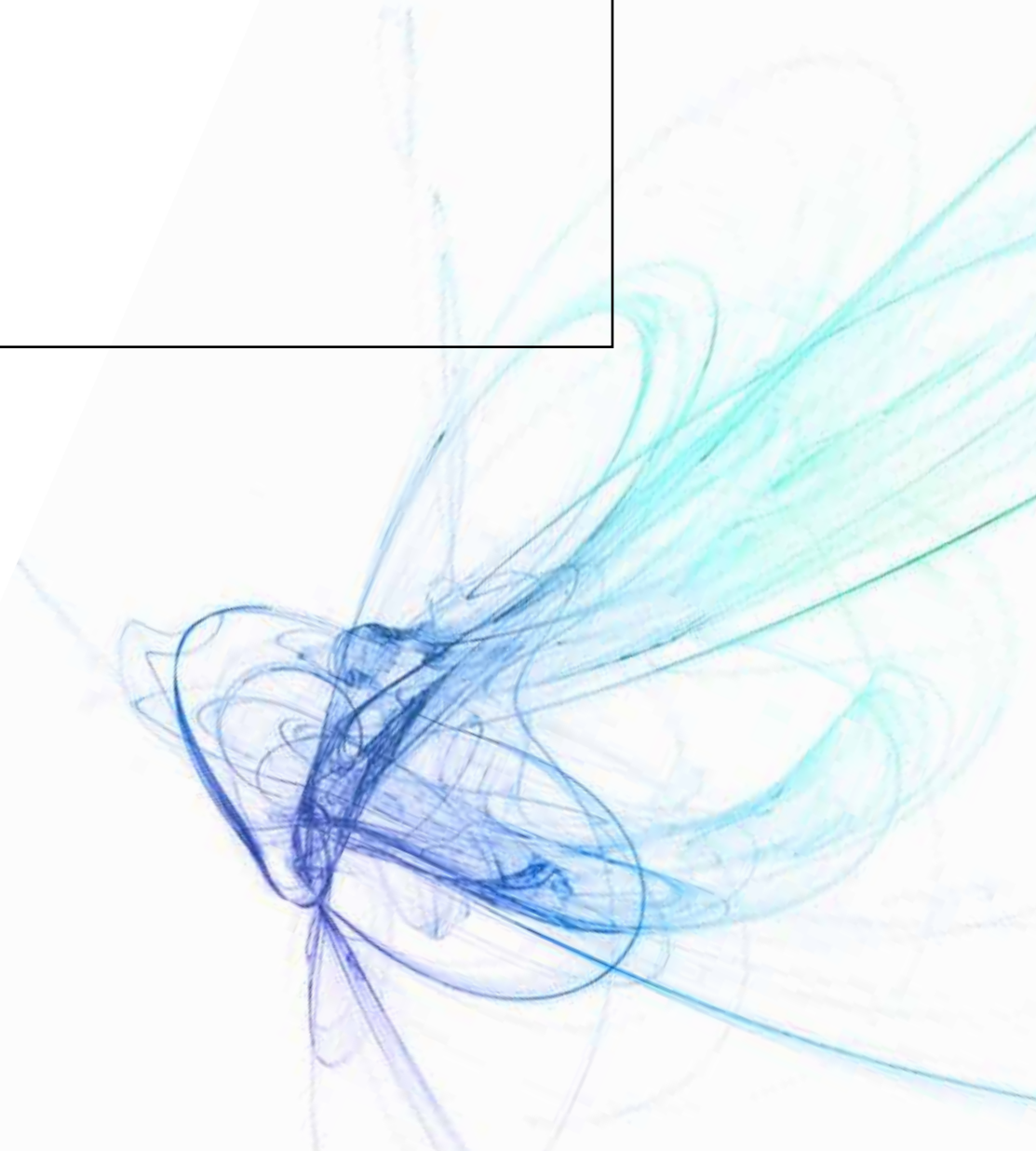
**indra**

DEFENSE AND SECURITY

# **AMES FAMILY ESM/ELINT SYSTEM**

Defense and security in five continents

[indracompany.com](http://indracompany.com)



# AMES FAMILY ESM/ELINT SYSTEM



Pie de foto

The AMES Family of ESM/ELINT systems combine the high probability of intercept with the search and analysis capability for fast accurate measurement of instantaneous parameters of all radar emitting targets even in a dense electromagnetic environment.

## Descriptive

The architecture design using state of the art technology of the AMES systems performs electromagnetic surveillance and signal data collection missions in the radar band, from 0,5 to 42GHz.

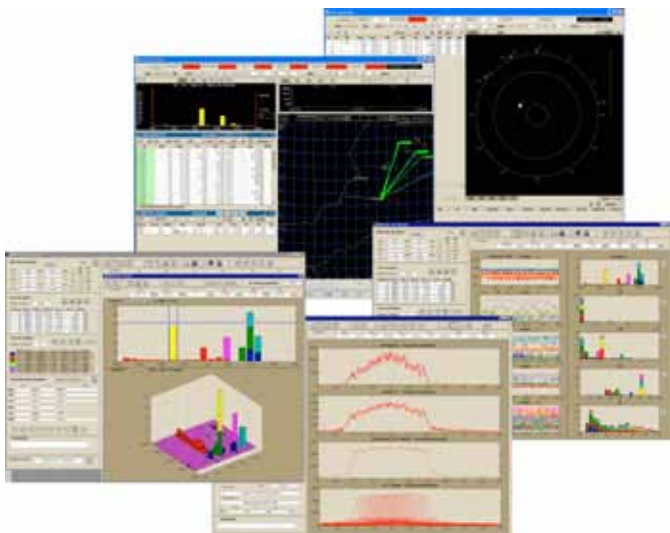
The de-interleaving capability, analysis and tracking of emissions, emissions classification and accurate identification, emissions analysis, recording of results for further off-line analysis, fine DF and emitters location and signal database management are the main functions to be develop by the system.

## Transforming data into knowledge

The AMES system provides collection, detection and measurement emitters, for identification and high resolution localization of potential targets, in a dense emitter environment, The data processing and analysis capabilities of the ESM/ELINT system provides a data reduction in order to finish the process with a useful knowledge of the emitters present in the environment even in the presence of multi-path and interference.

## Key system capabilities

- Real time electronic Order of Battle
- High accuracy parameters measurement
- Load and download threat libraries and recorded data
- Interface with another on board equipment
- Full integration with RWR system
- the detection and localization of new emissions by use of DF spin technique
- the observation and registration of the activities of known /unknown emitters
- the analysis of narrow-band new emissions
- create PDW data and report as final result
- Warning function
- Built in Test function
- Countermeasures control



## Modular open architecture



AMES Family is a range of ESM/ELINT systems with a modular and scalable architecture which provide the capability to be adapted to specific needs.

The expansion capability of the AMES systems architecture covers today's needs and keeps the door open to fulfil the future needs.

AMES-C is the Airborne ESM/ELINT system for surveillance, tactical and strategic missions support by performing instantaneous 360° location and tracking of emitting targets. It is composed of two sensors for narrow band and wide band.

AMES-800 is a full digital reception ESM/ELINT system based enhanced with linear interferometer arrays for measurement accuracy. Full integrated with RWR system.

AMES-U is the light weight and compact ESM/ELINT system version for UAVs and other small size platforms.



ISO 9001:2000



**indra**

Ctra. de Loeches, 9  
28850 Torrejón de Ardoz  
Madrid (Spain)  
T +34 91 626 80 12  
F +34 91 626 58 87  
ames@indra.es  
indracompany.com