



## SILVER

# Battlefield Management System

Indra's answer to the growing requirements of situation awareness and command and control in the new battlefield scenario

### Mission

Current conflicts are characterized by complex scenarios with large number of friend, neutral, unknown and hostile troops, even of in urban environment in presence of civilians.

In consequence commanders demand more efficient tactical command and control capabilities for efficient coordination and reaction against any environment change.

SILVER system enables commanders making decisions in a timely manner, by acquiring information reported, creating a common picture of the operational situation (COP), and exchanging orders and operational information, to be able to coordinate and react effective and efficiently.

### Characteristics and benefits

- SILVER allows mission planning, coordination, monitoring, and mission debriefing.
- Modular, incremental and scalable design adaptable to customer needs.
- Integration with legacy onboard systems (navigation, FCS, platform data, etc.) by standards like CANBUS or Ethernet.
- Capable to operate with legacy tactical communication radios.
- SILVER system uses NATO standards protocol to exchange and display information (AdatP3, APP6).
- Real-time data from ISR resources.
- Powerful functional capabilities like video in streaming, and emergency modes.
- Service-oriented architecture, platform independent.
- Safety, solid and robust reliability.
- Intensive use of COTS.
- Adaptable to Customer' doctrine.
- Configured to any level of command with different information needs: Battalion, Company, Platoon, Squad.

## Features

SILVER tracks and control friend units in the arena, and allows the interoperability with allied forces, distributing the common relevant operational picture among troops, increasing force protection.

SILVER enhances effectiveness, reduces fratricide and decreases casualties.

All elements share same Geographical Information System (GIS), fully adapted to the operational role of the user and the terminal.

SILVER has its own data communications management system.

Supporting each operations stage: planning, deployment, development and debriefing.



## Integration

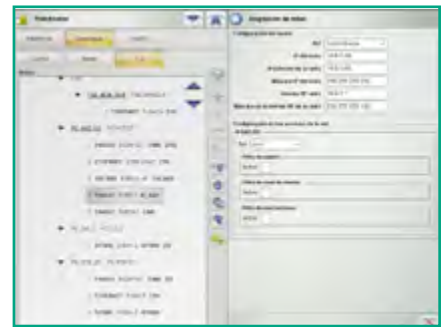
SILVER is a tailor-made solution for each of our customers in three areas: application, communication and platform.

The SW Application is the "core of the product" that runs in HW COTS or HW specifically designed according to the vehicle constraints.

SILVER also adapts its performance to the characteristics of the chosen tactical radio.

SILVER accepts different level of integration, and it is already installed on various types of platforms, both chains and wheels.

## HMI



## Functionalities

### Situational Awareness

- Location of own, friendly and enemy forces (FFT)
- Obstacles representation (minefield, etc.)
- Dissemination of information to all combat team

### Mission Planning

- Terrain analysis
- ORBAT Definition
- Logistic Support

### Navigation

- Integration with platforms to provide own location
- Route management (Creation, edition, activation)
- Tactical chat among network nodes

### Platform Management

- Vehicle navigation Data
- Onboard Fire Control system
- Systems Test data

### Information

- Voice, Data and Video integration
- Efficient communications usage (Tested with tactical radios)
- Radio Management and Tele-Control Module

### Security

- Measures to secure the information
- Encrypted communications
- User access control / audits

[indracompany.com](http://indracompany.com)

Avda. de Bruselas, 35  
28108 Alcobendas  
Madrid, Spain

T +34 91 627 10 00  
[infodefence@indracompany.com](mailto:infodefence@indracompany.com)

Indra reserves the right to modify these specifications without prior notice

**indra**