



indra

THE HEALTHCARE IT SOLUTIONS

32 MILLION PEOPLE SHARE OUR SOLUTIONS

4 continents already use our healthcare solutions

indracompany.com



32 MILLION PEOPLE SHARE OUR SOLUTIONS



5.600 hospital and healthcare centers
100.000 professionals using our systems
500.000 appointments every day

Our healthcare model

Indra provides a new global healthcare system model focused on citizens and based on criteria of [accessibility](#), [clinical safety](#), [sustainability](#) and [interoperability](#), where:

Citizens also interact with their healthcare records.

Information is available where it is needed, with no geographical boundaries.

Professionals receive the information they need at any given moment.

Accessibility

Integrated healthcare network, support new assistential services.

Multichannel access services to consult, manage and process data.

On-line monitoring, on-line medicine and Telemonitoring, telemedicine (no on-line medicine) and Ambient Assisted Living.

Sustainability

New treatment, organisational and working models based on criteria of flexibility, productivity and validity.

Optimised use of human and material resources.

Clinical management. Increase efficiency due to improved knowledge.

Clinical safety

Quality and safety as attributes inherent to healthcare services.

Technology for the secure identification of patients, generation of alerts for patients and professionals, therapeutic compliance.

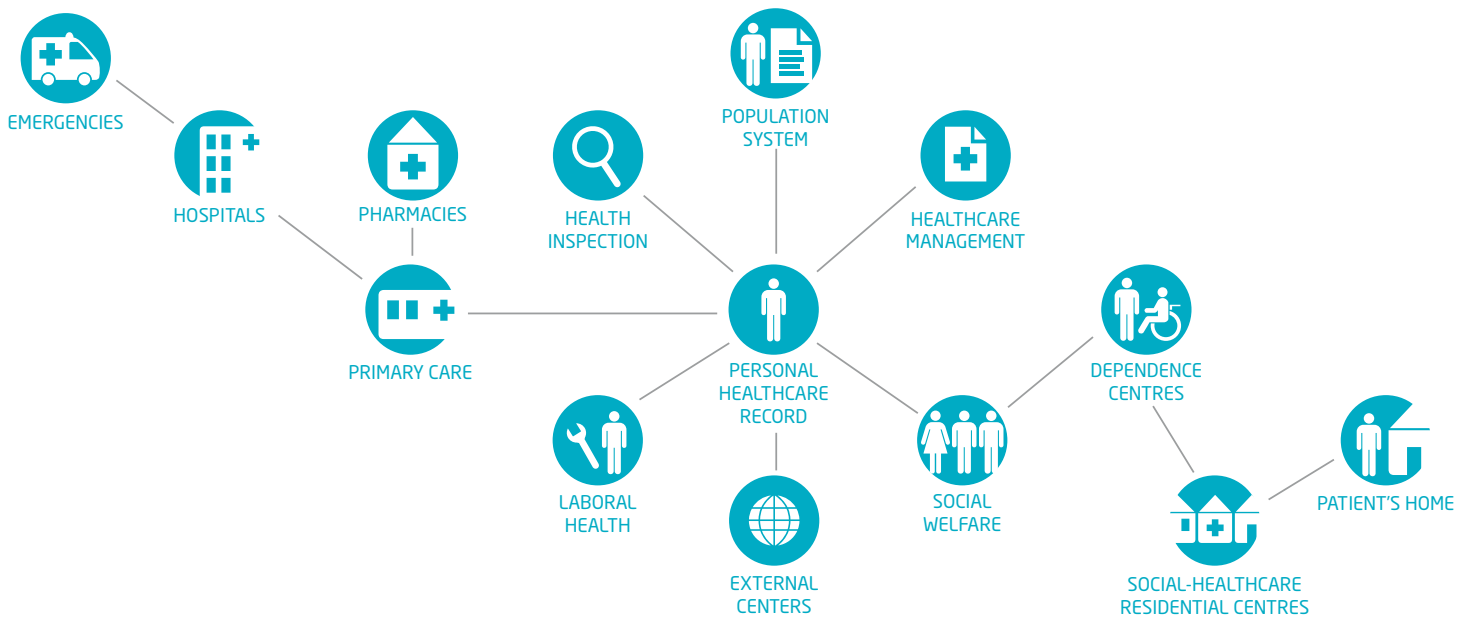
Interoperability

Collaboration and co-operation among healthcare system agents and between them and external entities.

Complete connectivity during the entire clinical activity.

Open architecture aimed to facilitate services-oriented integration.

Use of standards: HL7, DICOM, IHE...



Healthcare environments

Regional healthcare systems
Hospital environment
Primary care
Dependence solutions
Laboral health
Medical imaging

Healthcare IT Solution Model

The Indra's model covers all the administrative and support fields of a regional, national or corporative health system.

Its technical approach makes it possible to access and share information from allcentres, especially the patients' healthcarerecord.

Main solutions of the model

Regional Healthcare System: Global solution that covers structural systems (patient identification, health card, resources catalogue), administrative and clinical management systems of the various centres from the health network, and information management modules. This solution allows the creation of a homogeneous system and a unique healthcare record.

Hospital Management: hospital information system (HIS) that combines the management of the different departmental areas and systems. Multicentre & Multilanguage, it incorporates all kind of information (images, voice, video...) and includes state of the art technologies (electronic signature, fingerprint/voice/barcodes recognition, electronic billing, SMS and e-mail...).

Unique Healthcare Record: Sharing e-health records, more accessible, by authorised personnel from any location. Clinical, preventive, laboral and social information. E-health record focused on patient and structured in acts, episodes and clinical processes.

Digital Medical Imaging: diagnostic imaging services management, activity and reporting. Medical images management.

Clinical stations for each user profile: doctors, nurses, social workers, psychologists, etc., and the patients themselves (personal healthcare record). Personalization of the professional's workstation in accordance with profile and assistencial area: primary care and specialised healthcare, outpatients, A&E, inpatients, operating room and neonatal area. Tools oriented towards clinical safety, alert and notice system, evidence-based medicine. Telemedicine.

Our healthcare model

25 million of
healthcare records

1 million of electronic
prescriptions per day

8.900 imaging
studies per day

Electronic drugs prescription: assisted prescription system for doctors, long-term treatments and dispensing pharmacies.

Business intelligence: activity carried out, delay, morbidity indicators, comparison between centres, cost analysis...

Integral Care Center for Citizen: Integral solution for citizen, multichannel (telephone, SMS, mobile telephony, Internet, PDA, DTT ...) and multi-language that provides information, receives answers to queries, tasks manage and minimize visits to the centers

Population system: unique identification of the healthcare system user. Healthcare card.

Pharmacy: management of hospital pharmacy departments. Unidose.

Social-healthcare: Global and multidisciplinary integrated quality health-care model for elderly care and chronics with dependent. Including tele-assistance with electronic monitoring (bracelets, central alarms, detectors)

Telemedicine: telemonitoring, tediagnostic per imaging test, online consultations with medical specialists.

Order Entry (CPOE): laboratory, imaging, lab and other tests, transport, blood bank, medical interconsultation. Complete integration with departmental systems (other modules and external systems).

Agendas and Appointments: definition of agendas linked to resources, programming of consultations, tests, surgery, etc.

Invoicing: automatic posting for activity carried out, valuation, invoicing. Integration with ERP (Enterprise Resource Planning).

Tracking System: people or device tracking, zonal control and associated alert management.

Health Monitoring and Work Related Risk Prevention: Employees' health protection through their job post related risk prevention.

Personal Health Record (EHR/PHR)

Social Health service

Multichannel access services (TDT, 3G, internet)

Smart and assisted treatment

Telemonitoring and teleassistance

Ambient Assisted Living (AAL)

SOLUTIONS FOR
CITIZEN



Electronic Drugs Prescription

Medical station
Nursing station
Other professionals

Telemedicine

Monitoring

Digital medical imaging

Support system for EBM (Evidence Based Medicine)

SOLUTIONS FOR
PROFESSIONAL

Indra ranks as the #1 European company in R&D investment in the IT sector

Collaboration with more than 100 Universities and Research Centres

More than 500 million Euros invested in R&D during the last 3 years



Innovating in solutions and services for sustainability

At Indra we believe that in the future healthcare will continue to come first. That is why we are developing the most advanced technology so that this future can become a reality today. Indra provides a new global healthcare system model that puts citizens first

Technology can have a decisive contribution to financial, social and environmental sustainability.

Indra identified solutions and services in healthcare which can become potential

responses to various sustainability challenges proposed in healthcare in general.

Indra's aim is to promote these solutions and services.

Innovative Solutions to manage the future of Healthcare

Currently, Indra has an impressive innovation capacity, with high-qualified professionals with expertise in the latest technologies used in Defense, Transport and Traffic.

This fact allows us to import state of the art advances in technology as well as improvement of production processes and management models.

The numerous projects Indra currently is involved in are a good example of this capacity:

- **Tratamiento 2.0:** generic middleware platform designed to increase the medical treatment efficiency through patient telemonitoring
- **Toyra:** Occupational therapy and virtual reality-enhanced rehabilitation

- **E-Tiobe:** Intelligent e-therapy for obesity treatment.
- **EpSOS:** large-scale pilot of the European Health Project "Smart Open Services for European Patients" (epSOS), focused on the international interoperability of the patient health history and the electronic prescription and dispensation in Europe
- **RealtH:** Platform oriented to patient monitoring in the hospital home-care unit



ISO 9001:2000



indra

Avda. de Bruselas, 35
28108 Alcobendas
Madrid (Spain)
T +34 91 480 9015
F +34 91 480 9556
healthcare@indracompany.com
indracompany.com

Indra reserves the
right to modify
these specifications
without previous notice